



Fort Cherry School District

School Year 2008-2009
Final Budget



Contents

- **Budget Book**
 - Revenues; Expenditures
 - Function by Object; Object by Function
 - Key Financial Data and Fund Balance
 - Enrollments and Class-size
 - PSSA and Nationally-normed Achievement Test Results
 - Technology and Capital Budget
 - Initiatives/Grants
 - Budget Milestones
- **Key Highlights**
- **Financial Trends**
- **Enrollments**
- **Academic Testing**
- **Technology/Capital**
- **Budget Hearings and Timeline**
- **Comments**



Key Highlights

- Maintains All Academic Programs and Staffing Levels + 1 elementary teacher
- Upgrades Science/VoAg/Media
- Expenditures/Revenues/CPI – Next (Last)
3.87% (1.91) 3.5% (4.36) 2.8% (3.2)
no tax increase
- Capital – Tennis Courts/Media
- Continues Grants – less Project 720



Financial Trends

- Fund Balances
- Long Term Debt
- Revenue/Expenditure Comparisons
- Revenues – State, Local, Federal
- Assessed Valuation and Millage Generation
- Millage
- Debt vs Borrowing Capacity

Fund Balances

2,500,000

2,000,000

1,500,000

1,000,000

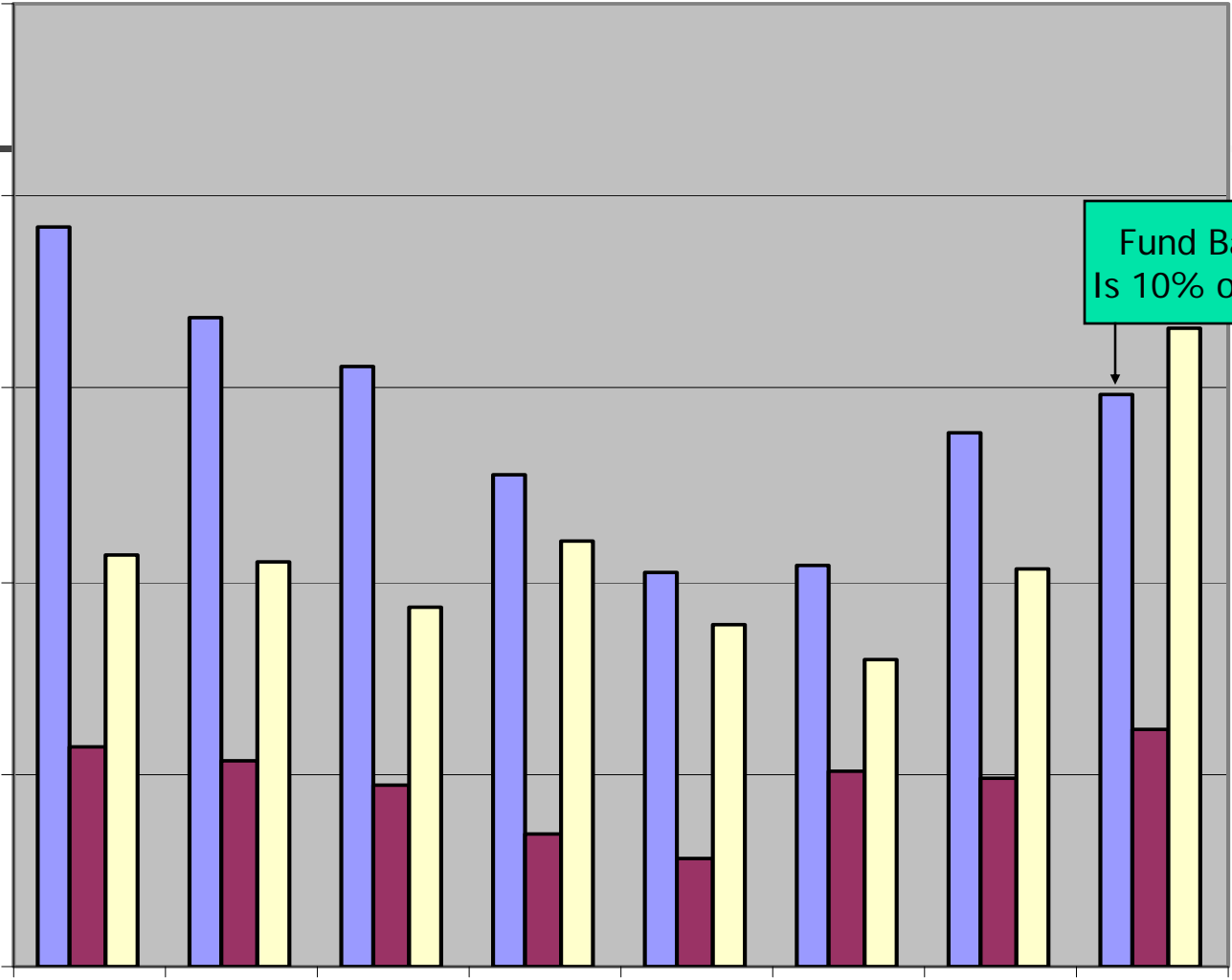
500,000

0

1999-00 2000-01 2001-02 2002-03 2003-04 2004-05 2005-06 2006-07

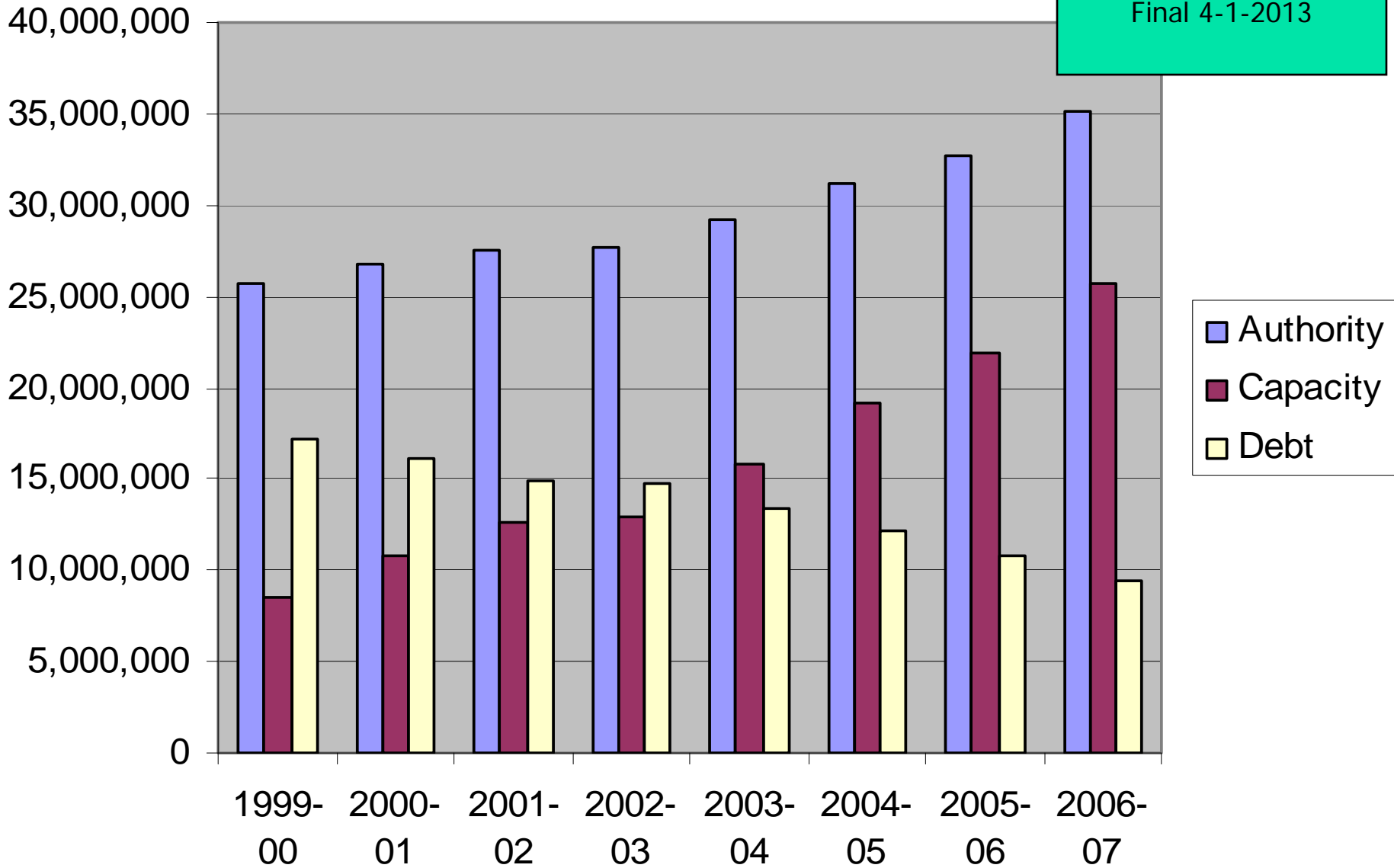
- General
- Reserve
- Capital

Fund Balance Is 10% of Budget



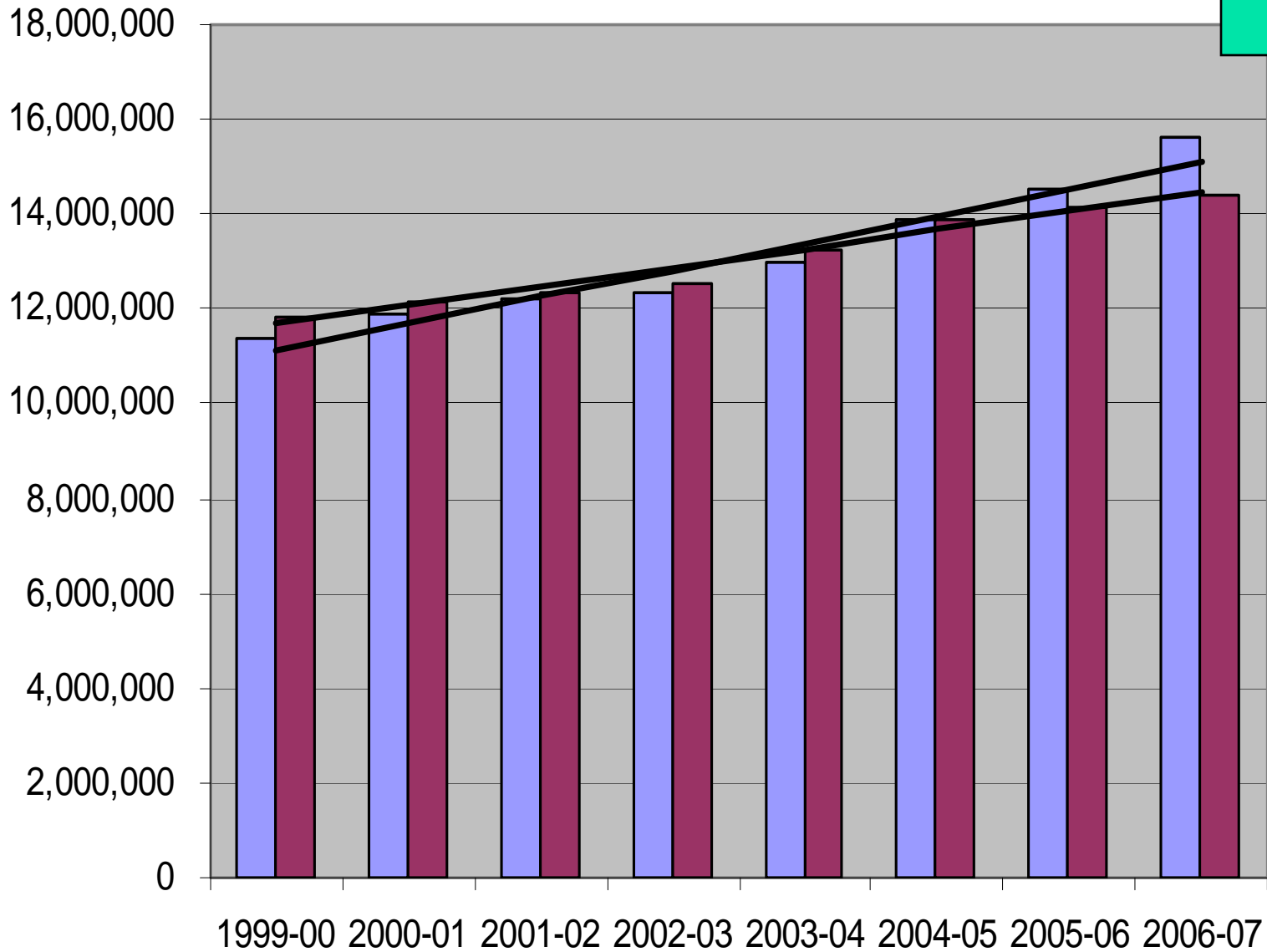
Debt

Current Debt \$7.8M
Debt Service \$1.8M yr
Final 4-1-2013



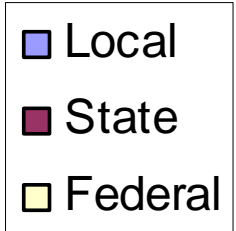
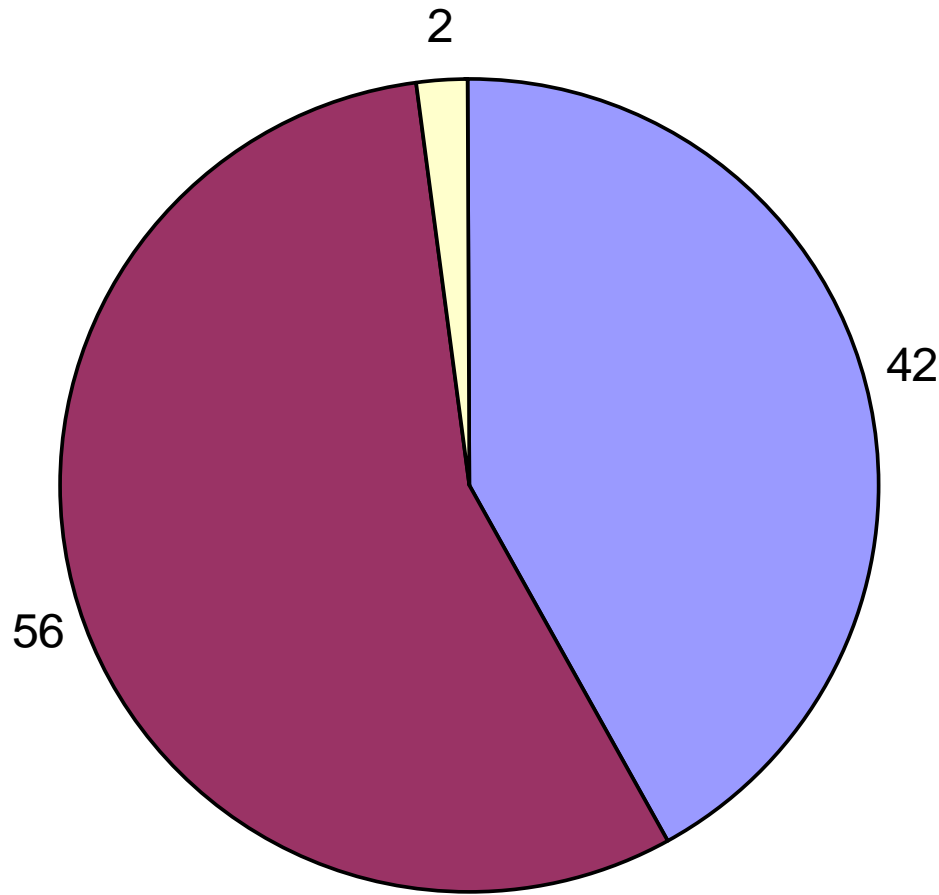
Revenues/Expenditures

In Last 8 Years
5 years of deficits
3 years of surplus



Revenues
Expenditures

Revenue %



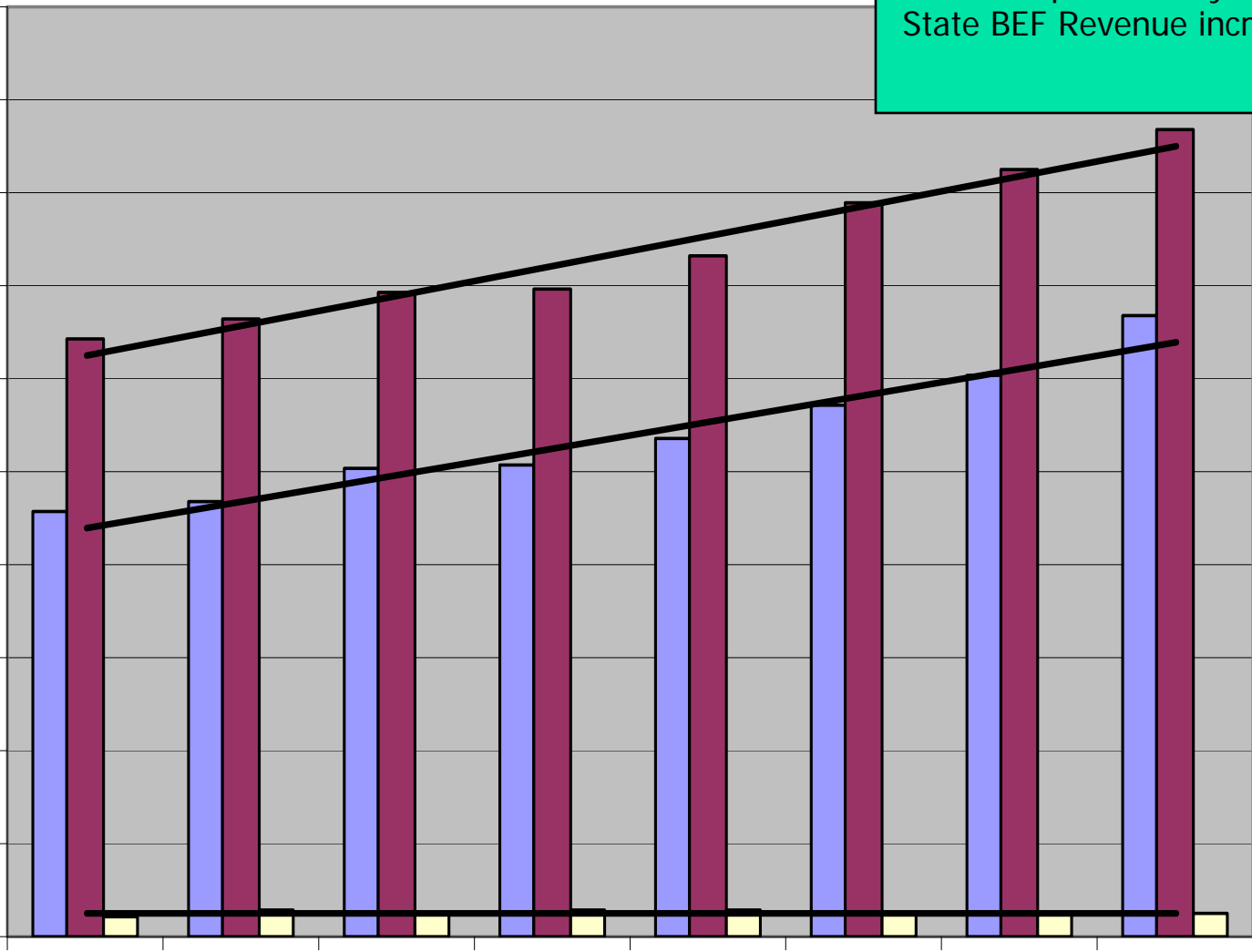
Revenues

10,000,000
9,000,000
8,000,000
7,000,000
6,000,000
5,000,000
4,000,000
3,000,000
2,000,000
1,000,000
0

1999-00 2000-01 2001-02 2002-03 2003-04 2004-05 2005-06 2006-07

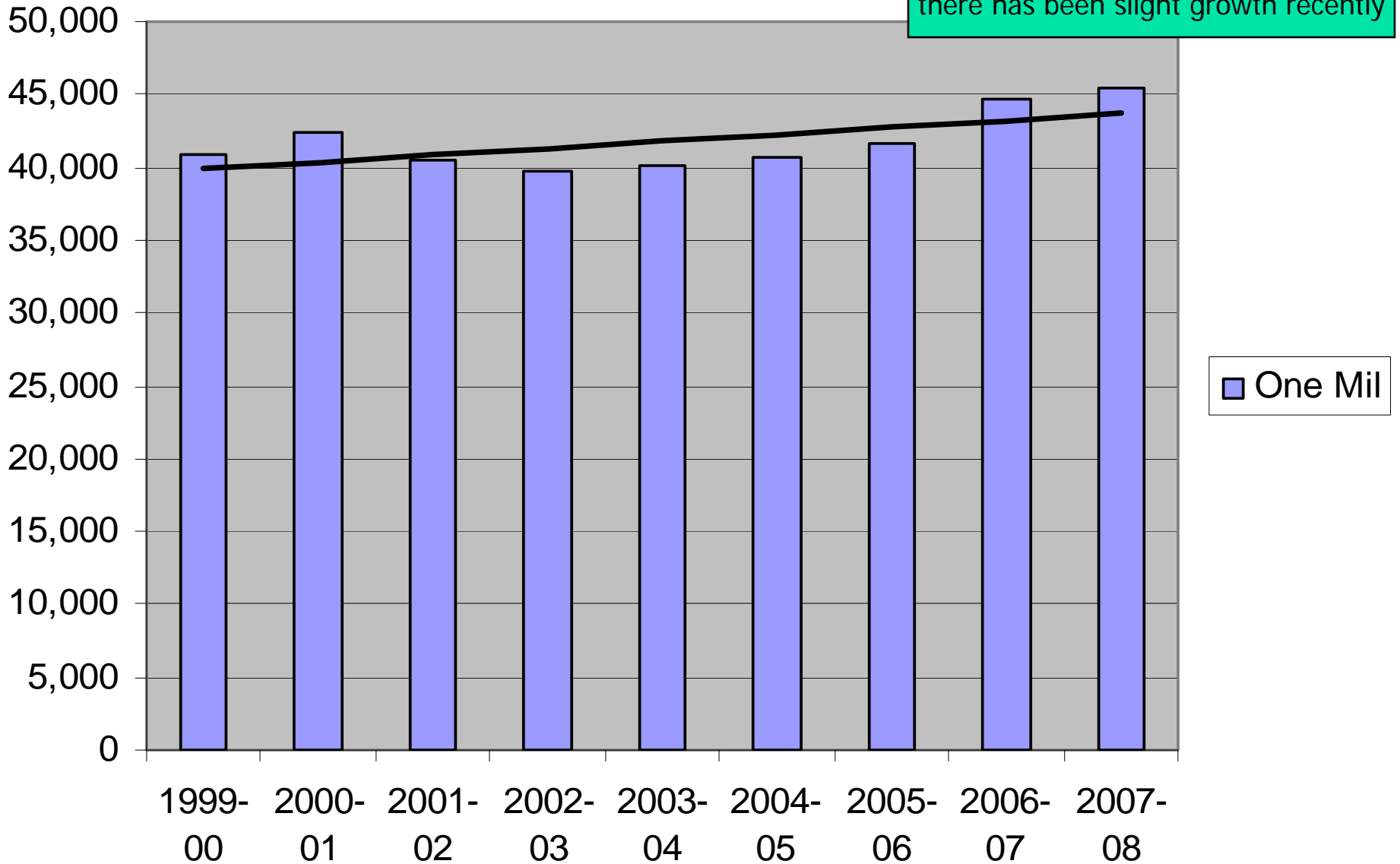
Local and State Revenue Growth
have kept relatively even pace,
State BEF Revenue increase 3.00%

- Local
- State
- Federal

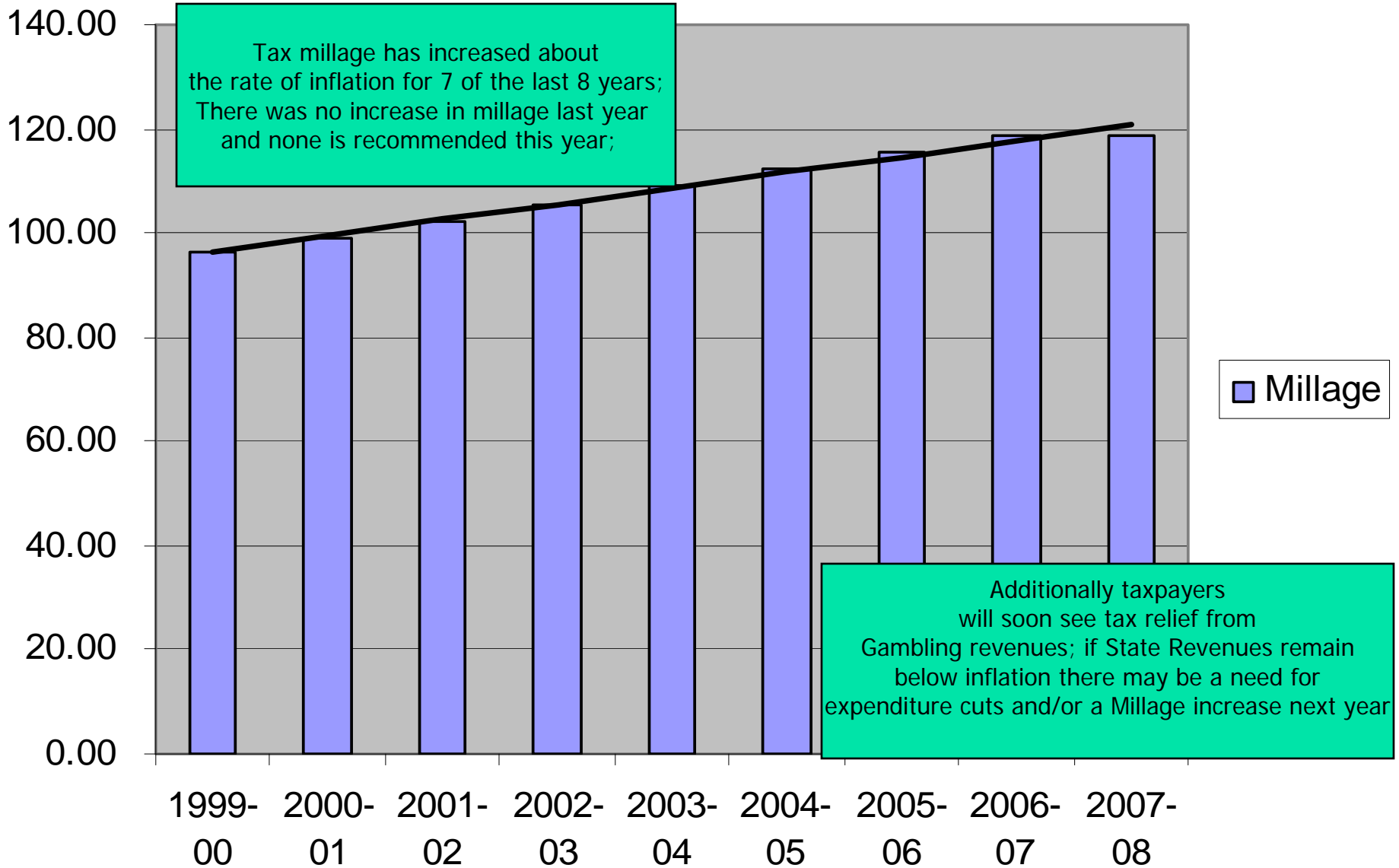


One Mil Generates

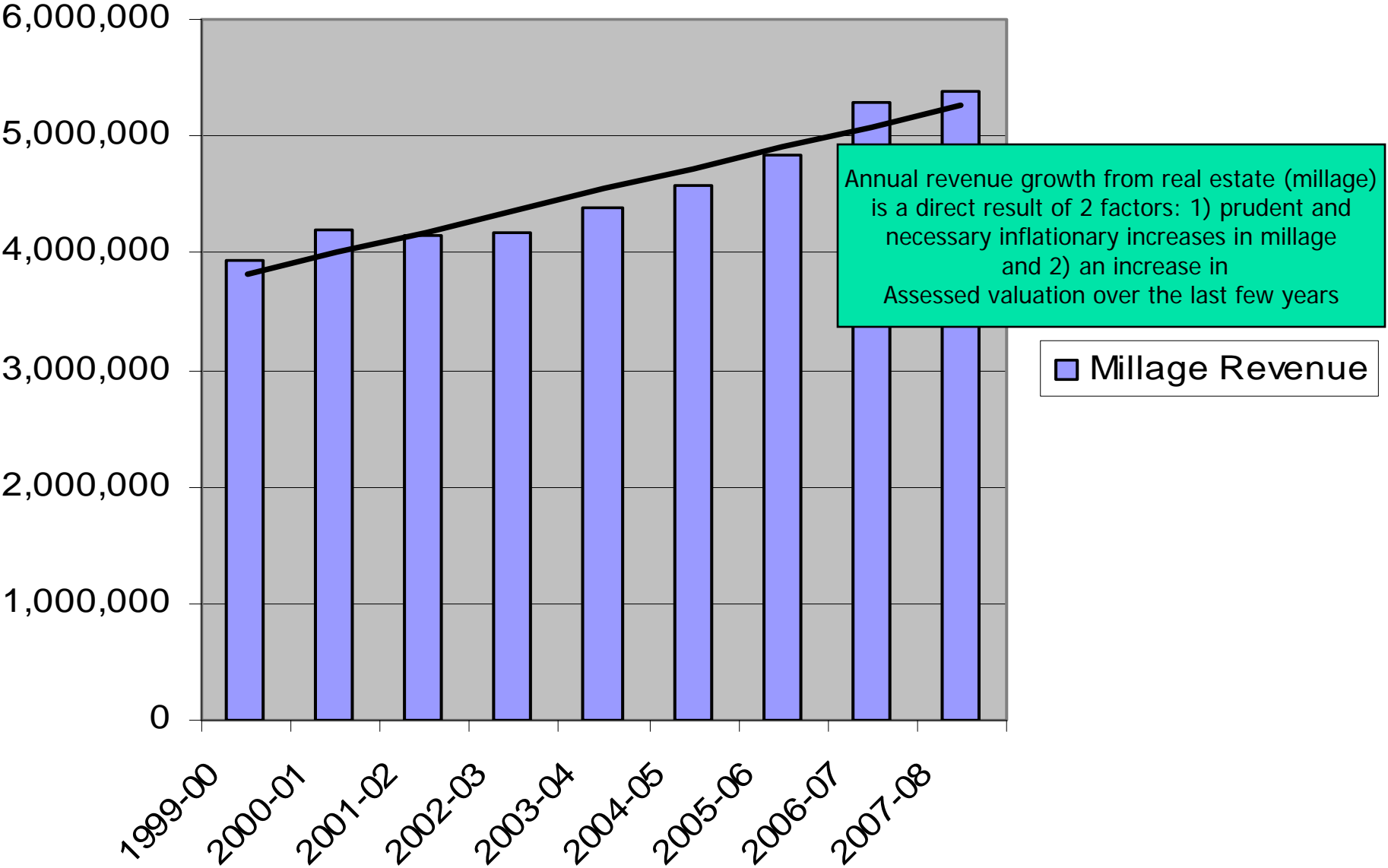
After 7 years of stagnant or declining revenue from one mil (Assessed Valuation) there has been slight growth recently



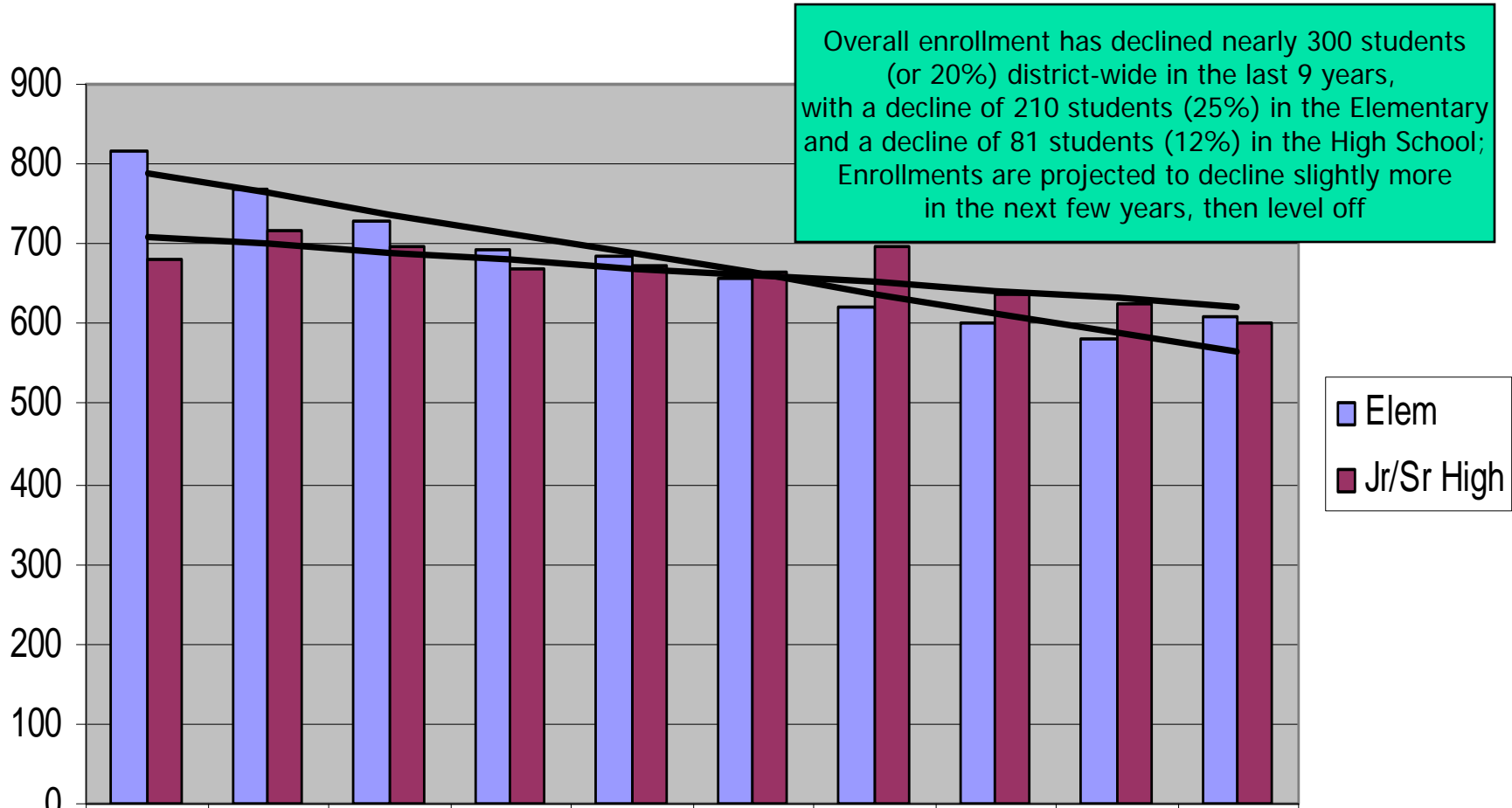
Millage



Millage Revenue



Enrollment



■ Elem
■ Jr/Sr High

	1998-99	1999-00	2000-01	2001-02	2002-03	2003-04	2004-05	2005-06	2006-07	2007-08
■ Elem	818	770	728	692	686	659	620	600	580	608
■ Jr/Sr High	682	716	695	669	672	666	695	636	627	601



Academic Testing

- PSSA
- National Tests

PSSA % Proficient or Above

PSSA MATH				
Grade	2003-04	2004-05	2005-06	2006-07
3		86	86	77
4			82	84
5	72	70	75	75
6			67	90
7			59	56
8	44	50	58	58
11	38	32	49	44

PSSA READING				
Grade	2003-04	2004-05	2005-06	2006-07
3		70	76	67
4			67	78
5	79	82	70	77
6			72	74
7			60	59
8	52	50	61	76
11	70	61	79	66

PSSA WRITING				
Grade	2003-04	2004-05	2005-06	2006-07
5			71	61
8			76	81
11	80	68	91	94



Reading National Normed

	<u>04-05</u>	<u>05-06</u>	<u>06-07</u>
<u>GRADE</u>			
1st	47.5	54.0	49.0
2nd	72.5	66.0	66.5
3rd	69.0	71.0	58.8
4th	65.5	69.0	68.0
5th	67.0	59.0	57.5
6th	58.0	68.0	63.0
7th	54.6	51.0	74.0
8th	54.6	62.0	72.0
9th	40.7	62.0	72.0
10th	70.0	66.0	84.0
11th	55.7	71.0	86.0



Math National Normed

	<u>04-05</u>	<u>05-06</u>	<u>06-07</u>
<u>GRADE</u>			
1st	40.5	47.0	44.0
2nd	71.8	63.0	60.0
3rd	61.8	63.0	54.3
4th	63.5	70.0	63.6
5th	62.3	62.0	53.0
6th	70.0	75.0	69.5
7th	45.0	51.0	66.0
8th	56.8	58.0	65.0
9th	51.2	63.0	42.0
10th	69.3	63.0	54.0
11th	46.3	59.0	66.0



Language Arts National Normed

	<u>04-05</u>	<u>05-06</u>	<u>06-07</u>
<u>GRADE</u>			
1st	53.5	56.0	56.3
2nd	74.7	61.0	59.0
3rd	59.7	63.0	54.3
4th	62.5	60.0	56.3
5th	62.2	64.0	55.3
6th	63.4	71.0	65.5
7th	55.0	60.0	48.0
8th	50.3	56.0	49.0
9th	46.5	57.0	54.0
10th	66.0	66.0	58.0
11th	55.6	72.0	60.0



Technology/Capital

- Technology –
H.S. Mobile Labs; Server; Projectors
\$244,149
grants(\$219,550)
- Capital and Capital Reserve –
Tennis Courts; Auditorium (complete); Softball Field;
Accounting Software; Media Center; Sidewalks -
\$429,000



Capital Campaign and Facilities Master Plan

- **Master Facilities Plan** combining future needs with resources to build and sustain facilities
- **Capital Campaign** setting funding sources through traditional (state reimbursement, alumni and friends) donations and non-traditional (economic and eco-friendly development) means



Capital Campaign and Facilities Master Plan

- Elementary built 1989 and eligible for renovation in 2009
- High School built in 1959, renovated in 1995 and eligible for renovation in 2015
- Strategic needs for additional community/athletic facilities
- Educational trends focus on careers; preparatory, remedial, accelerated learning; wellness and technology
- Current debt \$7.8M; debt service \$1.8M per year (\$400K reimbursed); debt retired April 2013
- Current authority \$35M; capacity \$26M; referendum necessary beyond (~CPI)
- 50 year Reunion - Alumni and community foundation
- Economic development initiatives
- Eco-friendly grants



Capital Campaign and Facilities Master Plan

- Fall 2008 – Establish Master Plan and Capital Campaign Committees
- Spring 2009 – Conduct public comment and Adopt Plan ----->
- Fall 2010 – 50 year reunion
- Spring 2013 – Current debt retired



Budget Hearings & Timeline

- Budget Hearings

- April 21 Preliminary Proposal
- May 7 Principals, Special Education, Curriculum/Grants, Athletics
- May 14 Technology, Cafeteria, Transportation, Facilities, Capital and Revenue
- May 19 Preliminary Adoption and Millage
- June 23 Budget Adoption



Comments

- Funding Public Education is Continuing Fundamental Review – Act 1 Referendum
- Mandates (Cyber) and Unforecast (Commodities) Increases Hit Hardest
- State Accountability Grants – High School Reform (this is last year)
- State Budget (3.00% BEF increase)
- Local Tax Rate Compensates for Stagnate Assessments and Inadequate Funding
- \$9.85 per hour